

# DC-70 X-Insight

Ultrasound System



Quality exams at your fingertips

**mindray**

# Precision and Efficiency: A striking balance

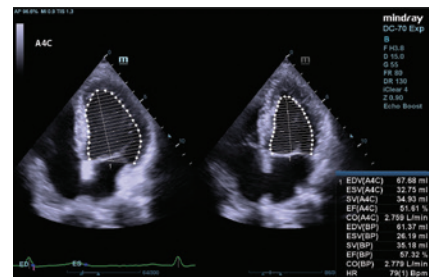
Based on insight from ultrasound professionals, the DC-70 ultrasound system with X-Insight is designed to deliver precision imaging and improve efficiencies in today's demanding ultrasound environment. The system provides the optimal balance of advanced technologies and workflow management tools which sets it apart from other systems in its class.

The integrated X-Engine, with both GPU and CPU, enables multi-core parallel processing for rapid and precise imaging. Combined with Mindray's unique 3T™ transducer technology, the DC-70 system provides fast image acquisition, increased penetration and high resolution imaging across all general imaging, women's imaging, and shared service applications.

## Efficiency with Auto calculations

### Auto EF (Ejection Fraction)

Auto EF uses proprietary technology to analyze 2D echo data to automatically recognize diastole/systole frames and calculate EDV/ESV/EF for left ventricle function evaluation.

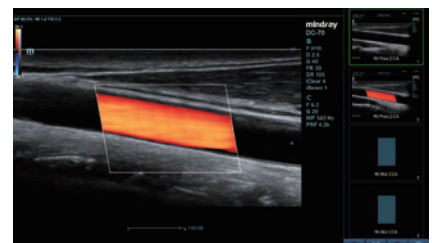


Auto EF

## Efficiency with Exam Protocols

### iWorks™

iWorks takes advantage of the built-in standard scan protocols to help standardize and reduce exam times. This highly flexible and powerful feature is further enhanced with user-defined capabilities.



iWorks™



# Exceeding Your Expectations

The DC-70 with X-Insight combines outstanding ease-of-use with better ergonomics, which results in more patient focus and high quality exams.

Mindray's unique dual-wing floating monitor arm delivers seamless movement for unlimited viewing angles and monitor positioning. The dual-wing arm also minimizes system height for easy transportation when folded down.

A 21.5" HD monitor and a 13.3" ultra-slim touchscreen with angle adjustment and powerful gesture-based operation provides clinicians with an agile, smart, and intuitive user experience.

The system's flexible control panel can rotate from left to right and is height adjustable, making the DC-70 accessible to operators in different clinical scenarios.





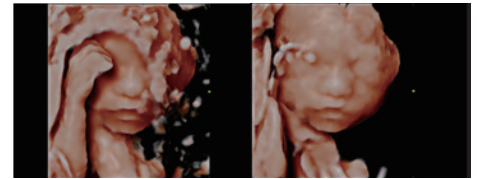
# Simply More Intelligence

To improve scanning efficiencies with more accuracy and consistency, the DC-70 with X-Insight provides intelligent workflow throughout the entire exam with rich tools such as Smart Planes CNS, Smart Face, Smart Track, iTouch™, Smart FLC and Smart OB/NT.

## Simplicity with auto image optimization

### Smart Face

Smart Face provides fast and intelligent optimization for fetal face with simple one-touch operation. It immediately removes occlusions, such as cord, placenta, uterus and extremities, in the volume data and eliminates unwanted information, generating an optimal view of the fetal face.



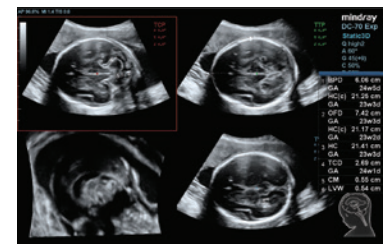
Original 3D

Smart Face ON

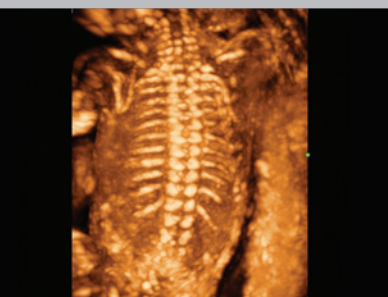
## Accuracy with smart acquisition

### Smart Planes CNS

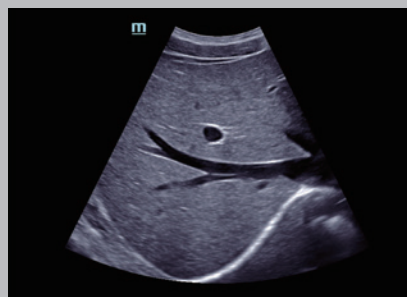
Smart Planes CNS provides a robust and user friendly solution to automatically detect planes and calculate frequently used measurements of the central nervous system (CNS) in fetal brain examinations. With a simple click of a button on a 3D fetal brain volume image, the standard CNS scanning planes (MSP, TCP, TTP and TVP) and a range of related anatomical measurements (BPD, HC, OFD, TCD, CM and LVW) are obtained immediately with high accuracy.



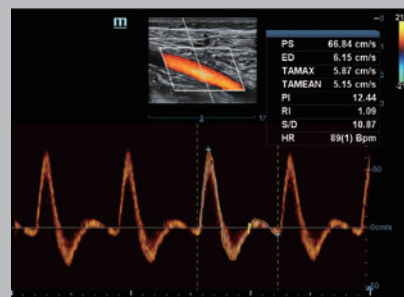
Smart Planes CNS



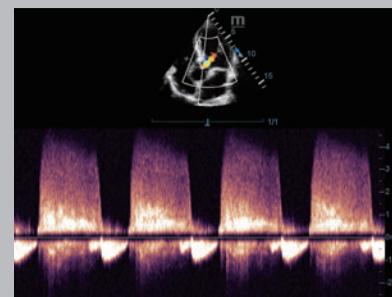
Fetal spine 3D



Liver



Popliteal artery with Triplex and Auto-trace



Aortic regurgitation

### Mindray North America Innovation Center

2100 Gold Street  
San Jose, CA 95002

Tel: 800.288.2121 Support: 877.913.9663 [www.mindray.com](http://www.mindray.com)

©2018 Mindray DS USA, Inc. Subject to change. Mindray® is a registered trademark of Shenzhen Mindray Bio-Medical Electronics Co. Ltd. 06/19 P/N: 0002-08-40401 Rev A

### Represented by:

Commonwealth X-Ray, Inc. | [www.commonwealthxray.net](http://www.commonwealthxray.net) | [cxr@cxrinc.net](mailto:cxr@cxrinc.net) | 859-885-4854

# mindray

healthcare within reach